

nest ::

spiking
neural
network
simulator

Forschungszentrum Jülich / Ralf-Uwe Limbach / SBC Lehmann

wide scalability

Capone et al., 2019; Potjans, 2014

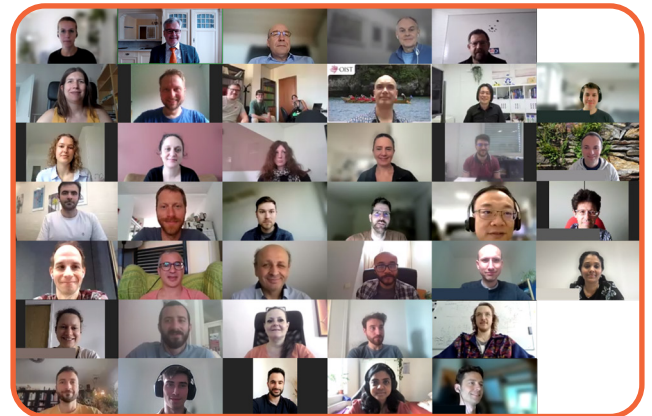
open model structure

Capone et al., 2019; Senk et al., 2019

scientific insight

Join us for the NEST Conference
June 17–18, 2025!

Your opportunity to meet
and share knowledge
with the NEST community!



Simulator

An extensible and scalable simulator
for large neural networks

ML

Modeling language for
neuron and synapse
models

GPU

GPU-MPI library for
large scale networks

nest ::

NEAT

Toolkit for morphological
neuron models

Desktop

GUI for building and simulating
neural networks

nest

- 20+ years of experience and optimization
- a worldwide collaborative community
- open source and sustainable development

To register and submit your abstract visit
<https://nest-simulator.org/conference>

